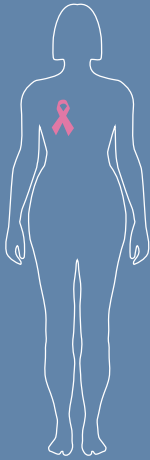




European Commission



Breast cancer burden in EU-27

Breast cancer is a malignant tumour that has developed from cells in the breast. It usually begins either in the cells of the lobules (the milk-producing glands) or in the ducts that drain the milk from the lobules to the nipple. Less commonly, breast cancer can begin in the stromal tissues, which include the fatty and fibrous connective tissues of the breast.

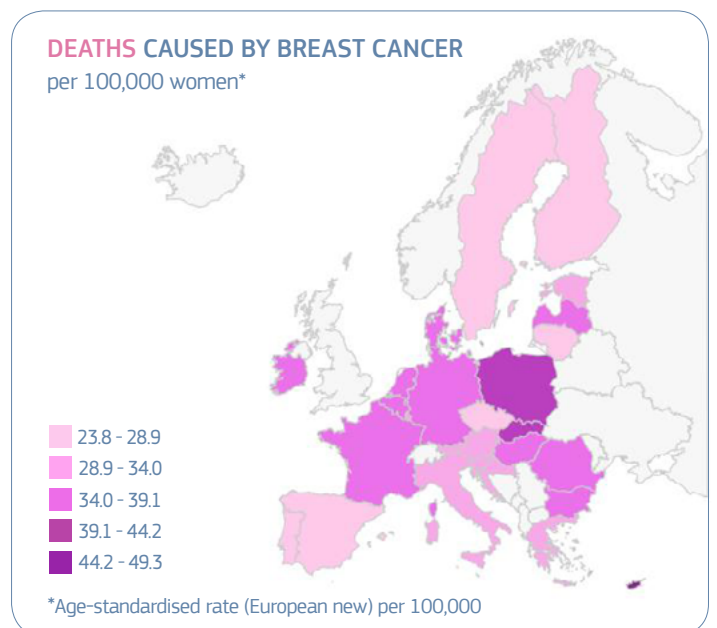
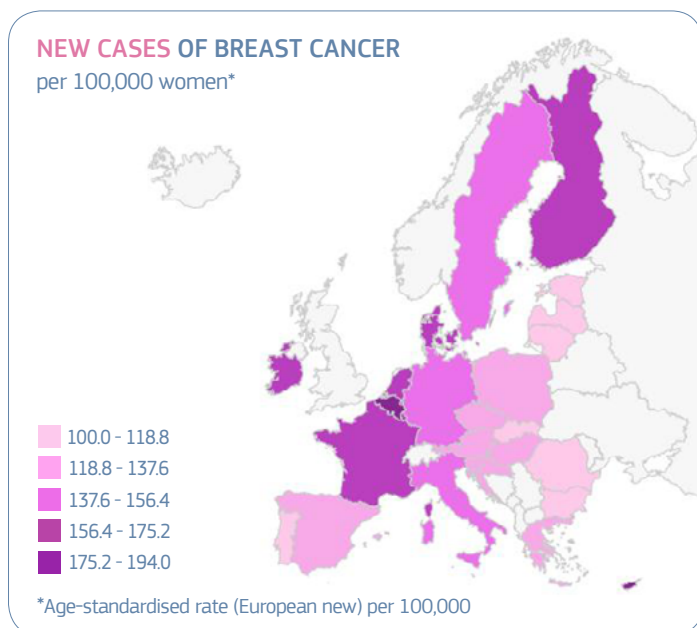
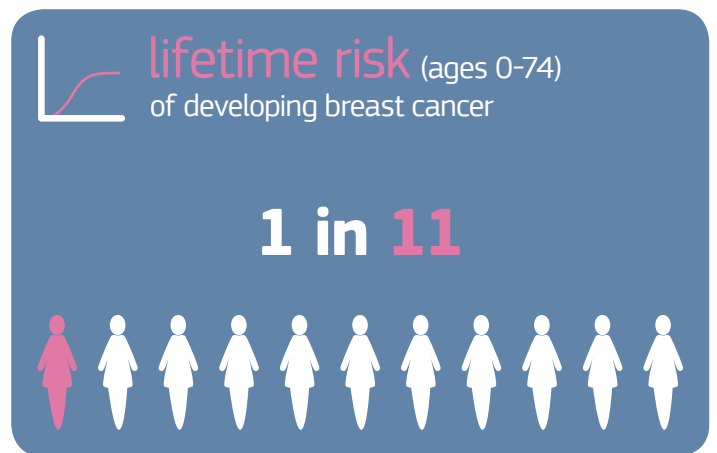
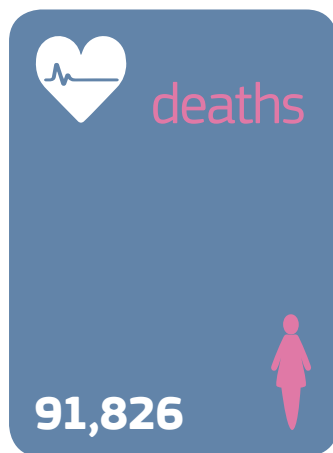
It is estimated that breast cancer accounts for **13.3%** of all new cancer cases diagnosed in EU-27 countries in **2020**. This makes it **the most frequently occurring cancer**. It is estimated that it accounts for **28.7%** of all new cancers in women.

Source: ECIS – European Cancer Information System

<https://ecis.jrc.ec.europa.eu>, accessed 15/10/2020

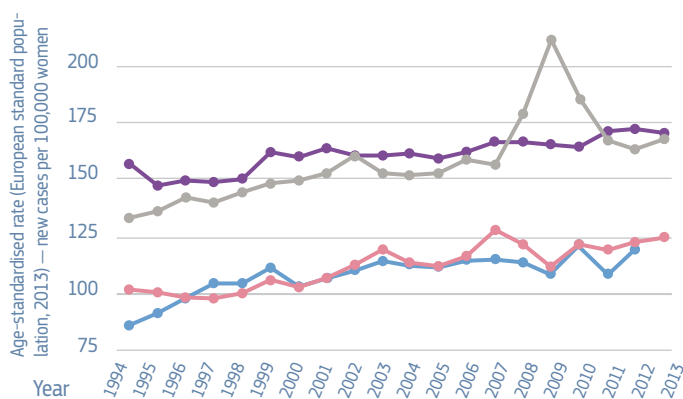
©European Union, 2020

2020 new cases (incidence) and deaths (mortality) estimates

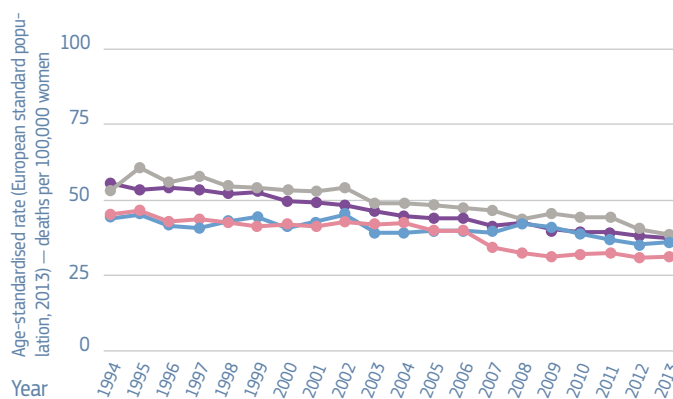


TEMPORAL TRENDS IN SELECTED COUNTRIES

NEW CASES OF BREAST CANCER – all ages, per 100,000 women



DEATHS CAUSED BY BREAST CANCER – all ages, per 100,000 women

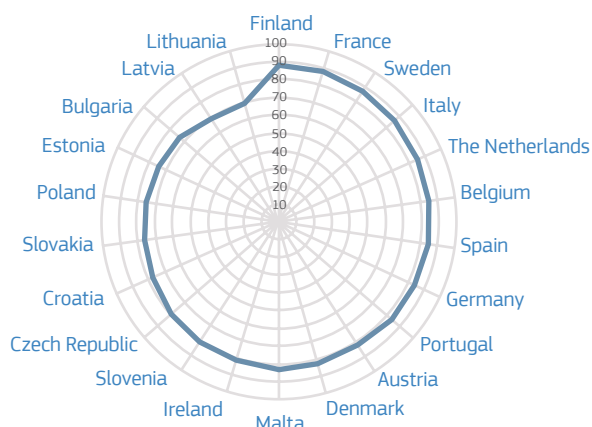


The examples (one from each European region: Central and Eastern, Northern, Southern, Western) are selected from available incidence and mortality time series of at least 20 years, from the ECIS web application archive (<https://ecis.jrc.ec.europa.eu>), complemented with the official mortality statistics from EUROSTAT (HLTH_CD_ASDR, HLTH_CD_ASDR2) for Slovenia.

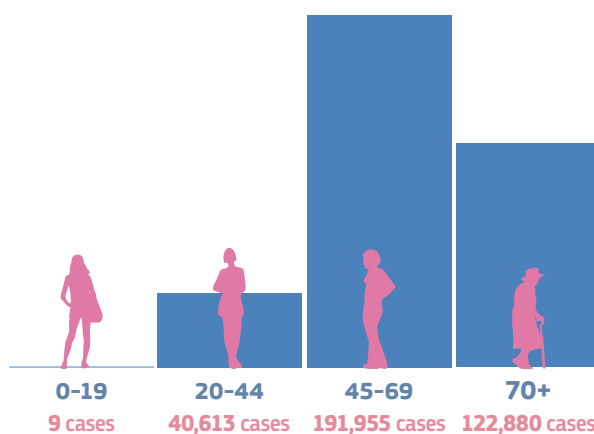
BREAST CANCER SURVIVAL

Ages >15, cancers diagnosed in 2000-2007

Percentage of women who survived at least 5 years after diagnosis



ESTIMATED DISTRIBUTION OF NEW CASES OF BREAST CANCER IN 2020 – BY AGE GROUP



HIGHLIGHTS

- Breast cancer is estimated to be the most diagnosed tumour among all cancer types and the first cause of cancer death among women in 2020.
- Estimated breast cancer incidence and mortality rates in 2020 vary two-fold across EU-27.
- Incidence trends in the EU-27 are mainly increasing. Multiple factors explain these changes, including reproductive factors, increasing obesity and physical inactivity as well as increased screening intensity.
- Mortality trends in the EU-27 tend to be in decline. This is mainly due to effective treatment and tools for detecting the disease at early stages.
- The five-year survival of breast cancer patients diagnosed in 2000-2007 is highest in Northern and Western Europe and lowest in Eastern Europe. National differences can in part be explained by varying levels of healthcare expenditure and resulting quality of diagnosis and treatment.

Grateful acknowledgement is given to the European cancer registries as the data source for the indicators reported in the **European Cancer Information System (ECIS)**.

This factsheet reports information from ECIS.

For details, please visit: <https://ecis.jrc.ec.europa.eu> or scan this QR code:



<https://cancer-code-europe.iarc.fr>



In collaboration with IARC, IACR, and EUROCARE